

HD523MR-7



DIGGING DEPTH

21'1"

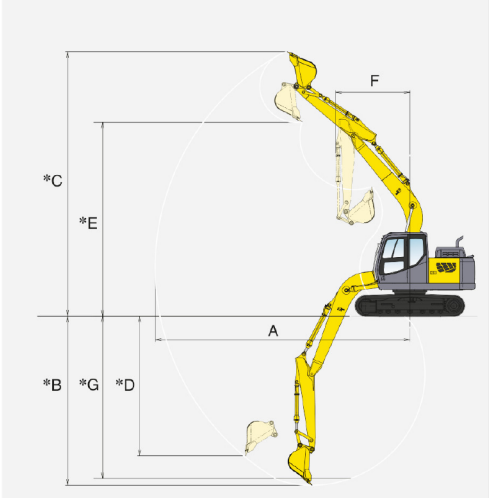
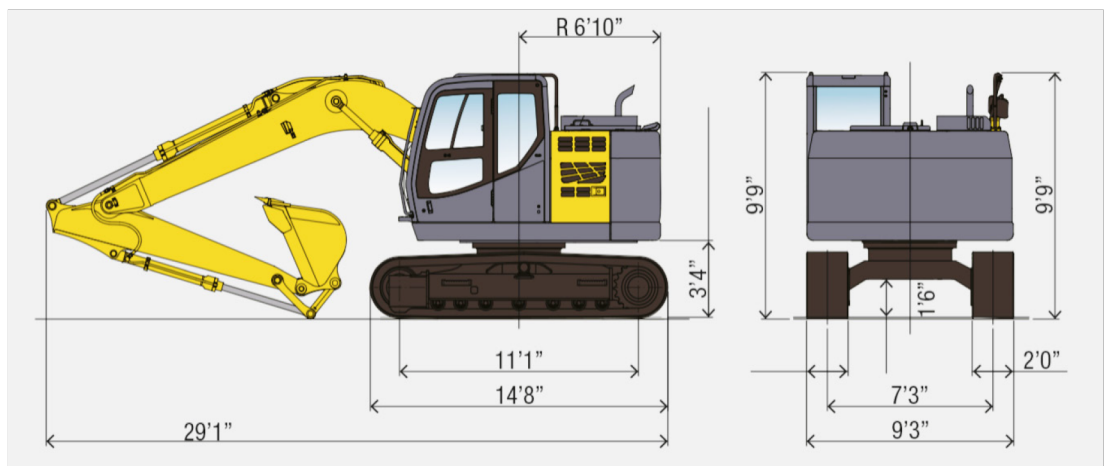
OUTPUT RATING

172 HP

OPERATING WEIGHT

54,050 LBS

KATO



		823		Working Ranges	
				STD	Long Arm
A.	Max Digging Radius	32'7"	35'8"		
B.	Max Digging Depth	21'1"	25'3"		
C.	Max Digging Height	32'3"	34'1"		
D.	Max Vertical Wall	19'7"	23'3"		
E.	Max Dumping Height	22'8"	24'5"		
F.	Max Swing Radius	11'5"	12'9"		
G.	Max Digging Depth at 8' floor length	21'5"	25'9"		

HD8 HD823

MODEL	HD823
ENGINE	
Rated output	172 hp
Starter/Alternator	24 Volt
Max torque	494 lbf-ft/1600 rpm
Pumps	Double variable piston pump and gear pump
System flow	58 + 65.5 g/min
Max system psi	4975 psi
Max digging psi	5265 psi
Swing Speed	
Max swing speed	14.0/min
Travel speed high/low	3.7/2.4 mph
Gradeability	35°
Max drawbar pull	41,365 lbs
Digging Force	
Arm digging force *at high power	24,504 lbs 25,853 lbs
Bucket digging force * at high power	33,721 lbs 35,745 lbs
Service Data	
Fuel tank	86 gal
Cooling system	10.6 gal
Engine oil	6.8 gal
DEF tank capacity	14.5 gal
Hydraulic oil tank	39.6 gal
Operating weight	54,050 lbs
Ground Pressure	7.4 psi

KATO

EXCAVATORS AND TRACK LOADERS

www.KATOCES.com

400 Production Court

Elizabethtown, KY 42701

(800) 538-1447 | Fax: (270) 737-0419